

Ray is a modular rug for exterior and interior environments available in two different versions.

The surface of the rug can be created either joining lengthwise cm 12 wide braids in solid or mélange colours or alternating braids in the same width and one- or two-colour cords in the same yarn.

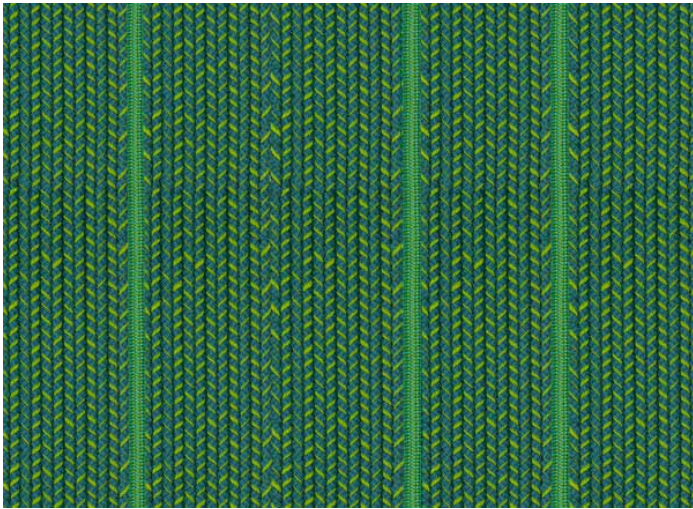
In this version, the borders corresponding to the braids extremities are finished with a ribbon in the same yarn, in the prevailing colour of the rug.

Only one mélange tone for the braids and one colour for the cords can be chosen.

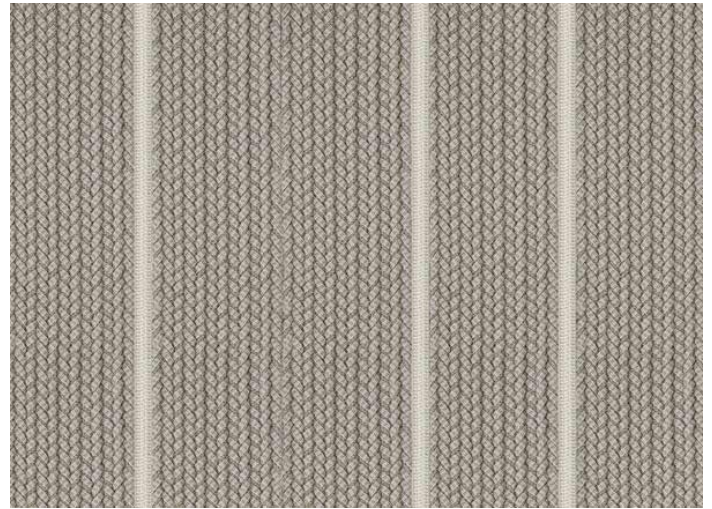
The width of the braids used for this version may vary between 10,5-12 cm, due to the braiding technique: the dimension of the short side is determined by the multiple of the braids and will often vary.

The texelement structure of this rug is free: an intense stepping may cause a variation of the rug's dimension.

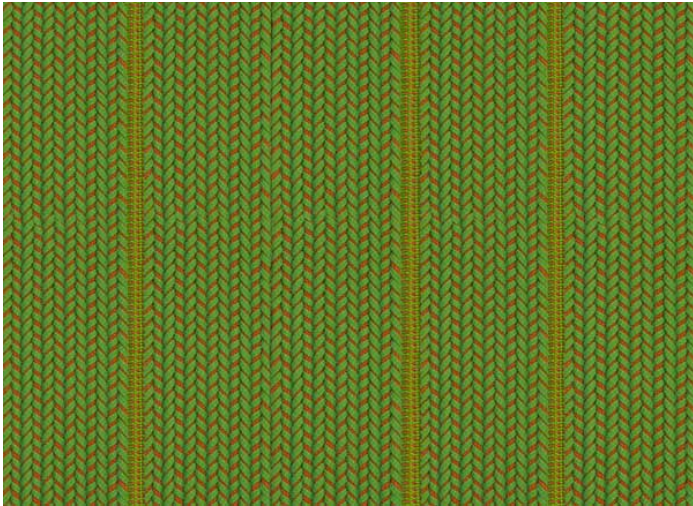




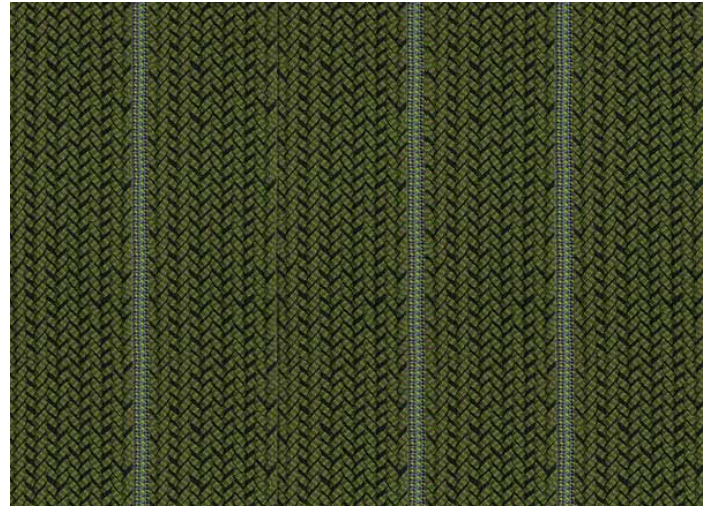
2. R286258 / T6206



1. R193782 / T3729



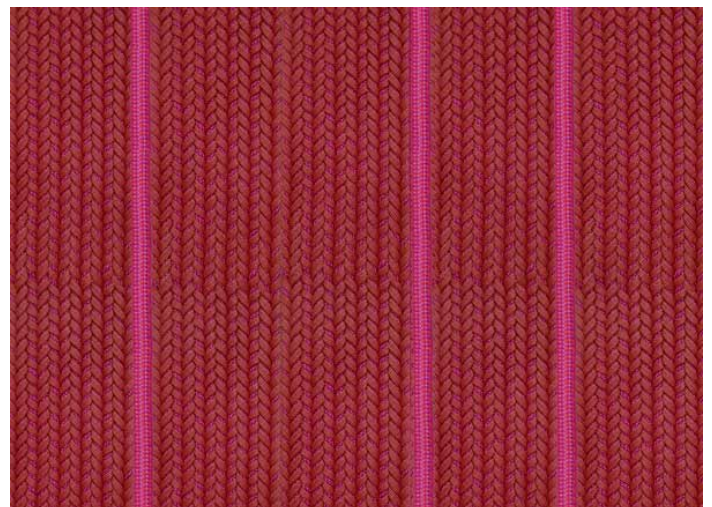
3. R032831 / T2811



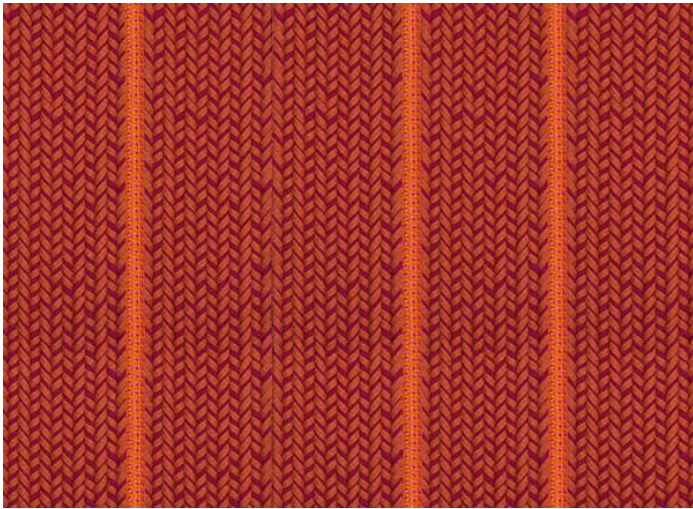
4. R831328 / T1328



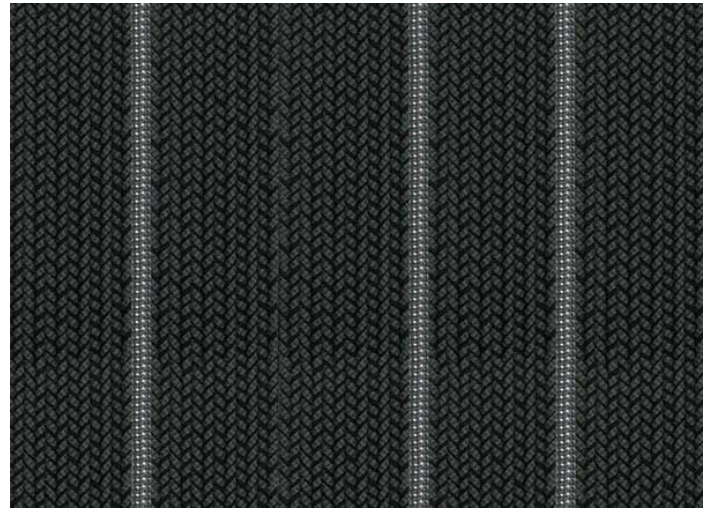
7. R343426 / T0626



6. R665611 / T6656



5. R660315 / T0315



9. R170712 / T0729



8. R342034 / T1712