



Side tables available in different dimensions.

Structure: AISI 304 stainless steel, matt varnished in avorio or grigio lava colour, plastic spacers.

Support surface: aluminium, matt varnished in a colour matching the structure.

Top: composed of hand painted square majolica elements.

The tops of the Segni side tables are made and decorated by hand with exclusive colours by Nicolò Morales.

Notes:

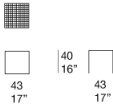
The decorations are made by hand. The material, the particular handwork and the production technique lead to colour and design differences between tables, even from the same batch and typology. Irregularity is the featuring characteristic of these working techniques.

The elements composing the tops of the Segni side tables are suited for an outdoor use, but do not withstand temperatures below 0°C. It is therefore necessary to protect the tables in an enclosed space in case of particularly harsh weather conditions, during the night if frost is expected or in areas subject to high day/night temperature variations and always for seasonal protection.

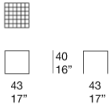
This product can be used also in interior environments.

We advise to use a Winter Set protection cover.

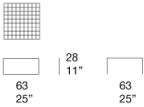
B152E



B152F



B153B

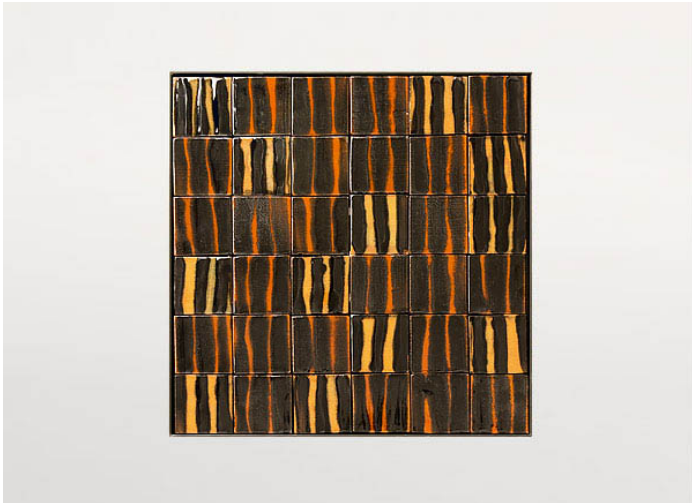




PMS127



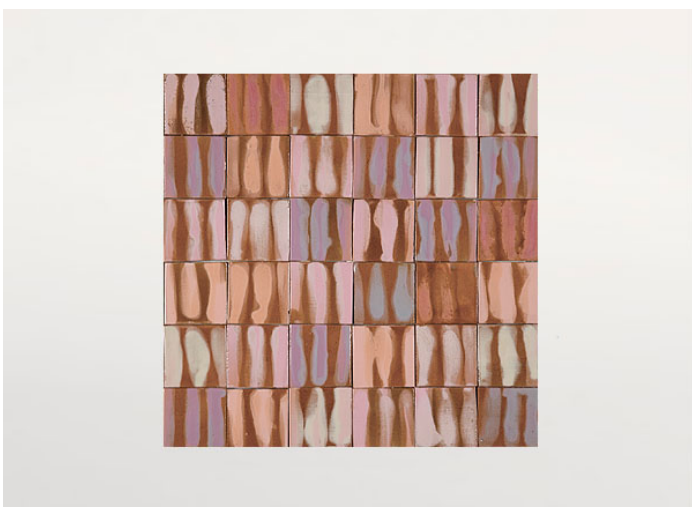
PML127



PML125



PMS126



PML126